

Situated atop a hill in this cultural and academic Kansai city, the Kyotanabe Plant places top priority on the concepts of "outstanding efficiency and quality," "consideration for the global environment," "global harmony," and "challenging the future." The Kyotanabe Plant implements high-tech equipment and facilities, including hardware and software, making it a state-of-the-art plant that is friendly to both people and the environment.

As a world leading company in its field the Tsubakimoto Chain Group, with the Kyotanabe Plant as its core facility, will expand business worldwide and cultivate opportunities in the 21st century through the provision of innovative "chain and chain technology." We will provide "best value" to our customers around the world.

State-of-the-art facilities in this cultural and academic city overflowing with nature!

The spirited aura of Kyotanabe reflected in Tsubaki's globally expanding chain business...

Chain assembly line



Road on the east side of the Kyotanabe Plant



Final inspection



Road on the west side of the Kyotanabe Plant



Global Sales & Marketing Department



Inside the Main Factory (MF)

Auto-Guided Forklift (AGF) in action



Kyotanabe
Plant Information

Pursuit of outstanding productivity and quality
Consideration for the global environment
Living together in harmony with the local environment
Bold challenges paving the way for a brighter future



JQA-0911
CHAIN DIVISION

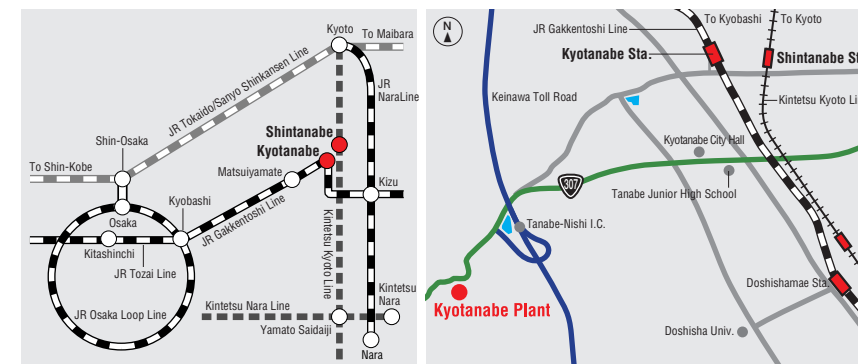
International Standards Approved

Tsubakimoto Chain places top priority on being friendly to people and the environment while consistently manufacturing reliable products. Our Chain Division, having been awarded the international standard of quality assurance ISO 9001 in 1995, next set its sights on acquiring the environmental management standard ISO 14001 through the promotion of environmental preservation activities. This is symbolized by the unique design of the Employee Plaza, which was designed to closely resemble a chain link plate (see photo above). The grassy area in front of the terrace has been specifically set aside for all of our guests to be used as an area to rest and recuperate.

TSUBAKIMOTO CHAIN CO. Kyotanabe Plant

1-3, Kannabidai 1-chome, Kyotanabe, Kyoto 610-0380, Japan
Phone : 0774-64-5022 Fax : 0774-64-5212

No. of employees: Approx. 800 Land area: 230,170m² Total floor area: 99,250m²



<http://tsubakimoto.com>



Kyotanabe Plant Information

TSUBAKIMOTO CHAIN CO.

Think globally, act locally
All for the global customer's delight

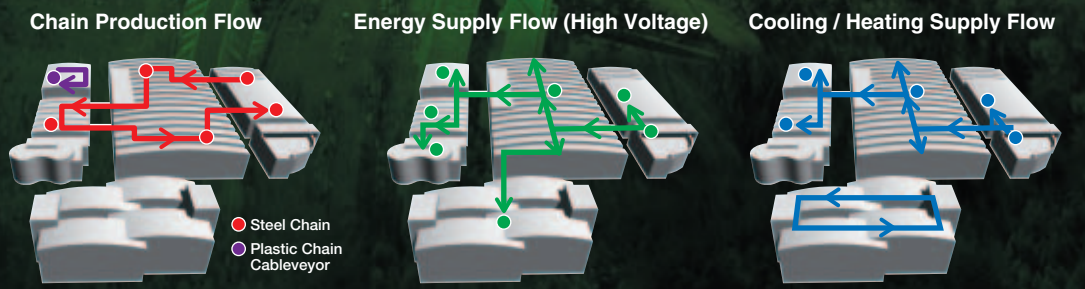
Aiming to become the World's #1 Chain Center



- A MF (Main Factory)
- B HF (Heat Treatment Factory)
- C NP (Engineering Plastic Plant)
- D PF / MW (Packing Factory and Materials Warehouse)
- E EC (Energy Center)
- F TC (Technical Center)
- G EP (Cafeteria and Employee Plaza)
- H SG (Security Gate)
- I Tennis Courts and Playing Fields
- J Mini Soccer Field
- K Cherry Blossom Road
- L Walkway / Observation Point
- M Orchard / Woods
- N Rainwater Management

Logistic Streamlining & Energy Efficient Supply System

From materials to parts, and parts to end products, this plant boasts a smooth flow of goods and energy. The factories are connected via the production yard network and an effective flow of goods is realized through the adoption of a well-planned layout and system.



Pursuit of outstanding productivity and quality

State of the art equipment and facilities supporting the number one quality chain products in the world

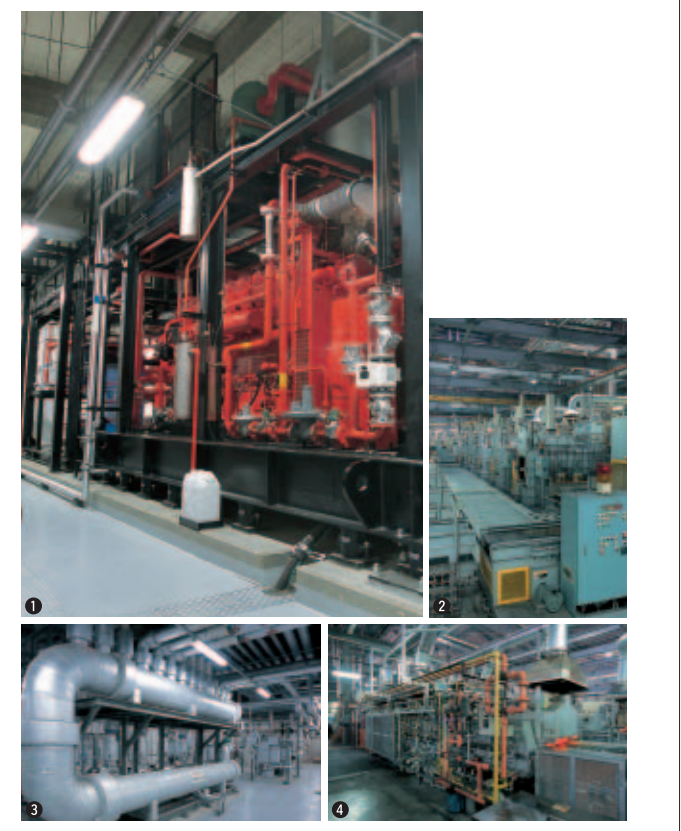


The Main Factory, boasting an enormous floor space of 300m×112.5m, is flexible enough to meet the needs of product changes; while the Engineering Plastic Plant is capable of conducting unmanned operations 24 hours a day. Cutting edge distribution systems along with manufacturing equipment have been adopted in both facilities. Furthermore, the development and introduction of a new concept production control system enables the manufacturing equipment and distribution system to be controlled efficiently as a network, focusing on outstanding quality and continual improvement in productivity.

- 1 Open layout of the Main Factory
- 2 Automated Storage & Retrieval System
- 3 AGF (Auto-Guided Forklifts)
- 4 Autran Vanguard

Consideration for the global environment

Devices and equipment promoting the use of a reduced amount of energy and resources

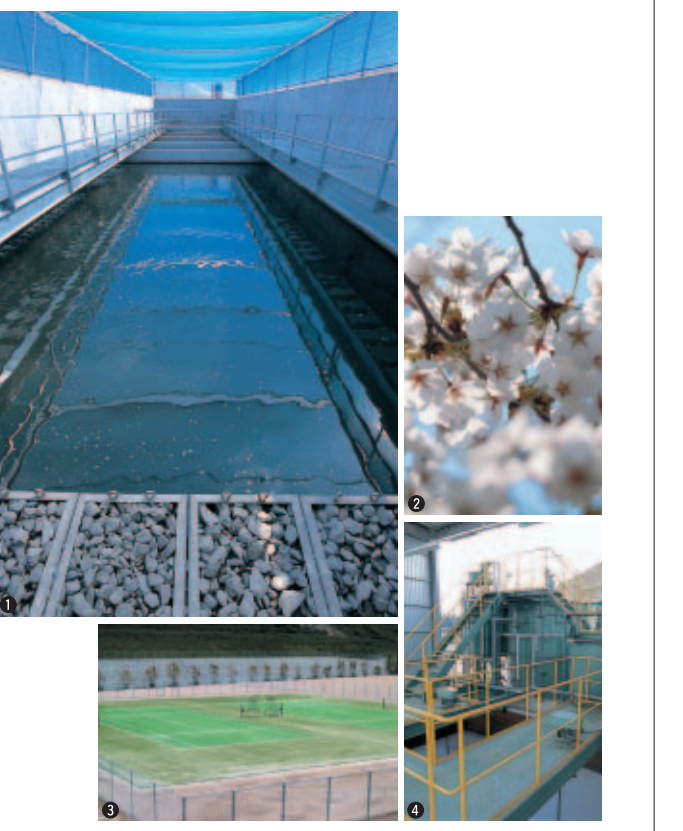


At the Kyotanabe Plant we are tackling global warming head-on through the promotion of the themes of "less energy", "less resources" and "recycling". For instance, through the adoption of a highly energy efficient co-generation (heat & electrical supply) system and an air conditioning system, which accumulates non-peak hour energy using water for ice/heat regeneration, we have reduced the discharge of CO₂ and heat waste. These state of the art facilities can be counted on to effectively put the brakes on the global warming phenomenon.

- 1 Highly efficient co-generation (heat & electrical supply) system
- 2 Environmentally friendly frameless-type gas furnace
- 3 Heat-exchange system where heat from the generators is used in the cooling of injection molding machines
- 4 Energy-saving type continuous gas heated furnace

Living together in harmony with the local environment

Creating a friendly environment for people and their surroundings



The Kyotanabe Plant is situated in an area filled with crystal clear air and an abundance of nature. In order to protect this nature and promote harmonious co-existence with the surroundings, we have taken all possible measures in dealing with environmental preservation. Furthermore, we are encouraging good relations in the area by making the tennis courts and grounds available on holidays to the local community.

- 1 Oil is completely removed from rainwater via a three-phase management system before being discharged into the river
- 2 More than 1000 cherry blossom trees of various types have been planted, including someyoshino and ooyamazakura
- 3 The grounds and tennis courts are open to the local community on weekends and holidays
- 4 Industrial wastewater treatment plant for preventing water pollution

Bold challenges paving the way for a brighter future

The Technical Center, leading the world in chain business and development



The base of the worldwide Tsubakimoto Group in "technological development and information transmission" has been centralized in the Technical Center. A system has been developed that integrates tasks from the development of base technology and marketing, to manufacturing, evaluation, and sales. Moreover, unique production and information management systems have been implemented to meet global needs. This center, having these fundamental functions, represents the core of our global network.

- 1 Simulating chain movement through structure analysis
- 2 Fatigue testing of chain in the pursuit of outstanding quality
- 3 Exterior of the Technical Center
- 4 Latest materials analysis through implementation of an EPMA (Electron Probe Micro Analyzer)

LINE UP

From the Kyotanabe Plant to the world

Drive Chain

- RS Roller Chain
- Lube-Free Roller Chain
- Corrosion Resistant Chain
- Low Noise Roller Chain
- Curved/Pin Gear Chain
- RF Roller Chain
- ISO B Roller Chain
- Leaf Chain



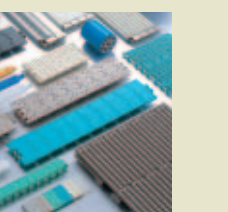
Conveyor Chain

- RF Double Pitch Chain
- RS Attachment Chain
- Indexing Conveyor Chain
- Free Flow Chain
- RF Conveyor Chain
- Water Treatment Plant Chain



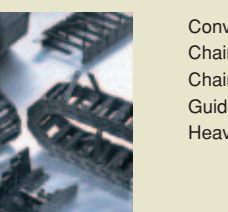
Top Chains

- Plastic Top Plate Chain
- Stainless Steel Top Plate Chain
- RS Pla-Chain
- BelTop Chain
- Peripheral Conveyor Parts



Cableveyor

- Plastic Cableveyor
- TKP
- TKC
- TKM
- Steel Cableveyor
- TK, TKS
- H, I, V
- Peripheral Parts



Peripheral Equipment

- Conveyor Components
- Chain Tensioner
- Chain Lubrication System
- Guide Rollers
- Heavy Load Carrying Roller

