

# TSUBAKI GRIPPER CHAIN

**For form, fill, and vacuum seal wrapping applications**

*Lower maintenance costs*  
*Increased uptime*  
*Increased productivity*



# A formidable new force has taken hold of wrapping operations.

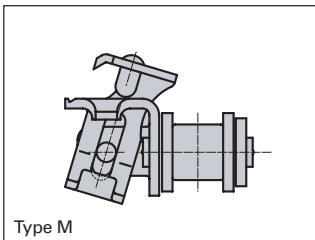
Gripper Chain from Tsubaki

Our high-performance roller chain is now available with both conventional and innovative new side-swivel gripper attachments for form, fill, and vacuum seal applications.

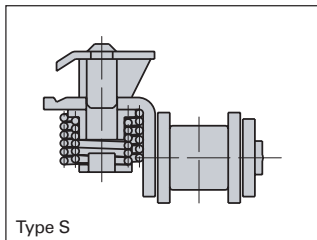
## Enhanced Operation

Tsubaki gripper attachments feature reliable clamping mechanisms to ensure precise positioning. High-performance springs are designed to last more than 10 million cycles, even at high speeds. Our Type M attachment's side-swivel design allows optimal material feed-through to ensure your lines run smoother.

High-quality Standard attachments, which open straight up and down, are also available.



Type M



Type S

## Exclusive! Quickly Cut to Length

Tsubaki is the only manufacturer to offer Gripper Chain with recessed riveted pins for easy chain length adjustment. Keep production rolling with less downtime.



## Industry-Leading Spring Design for Outstanding Grip Performance

Made possible by using the best combination of grip force, toughness, and accuracy.

## Quick, Uniform Start-Up

Factory pre-loading minimizes initial chain elongation. Colored connecting links are easy to identify while in service and convenient to install with spring clips.



## Applicable Industries

Food: Ham, Sausages, Cheese, Bread, etc.  
 Electric: Electric wiring, Globes, etc.  
 Medical: Syringes, Medicine, etc.

## Get a Grip on Truly Profitable Performance

Discover the difference Tsubaki's high-quality base chain makes in your bottom line.

- Lower maintenance costs
- Increased uptime
- Increased productivity

## Tsubaki Base Chain Options

### Nickel-Plated Chain

Nickel plating not only improves appearance but also gives the chain slight corrosion resistance. Therefore, it can be used in applications where there is exposure to water.

### Nickel-Plated Lambda Chain

Special oil-impregnated bushings deliver long life with no lubrication. The result is reduced labor maintenance, better operating environments, and greater productivity.

### Stainless Steel Chain

Tsubaki stainless steel corrosion resistant Gripper Chain is your solution for challenging environments. This chain combines proven design with wear-resistant hardened stainless steel components that extend service life and offer the highest load capacity of all stainless steel chains manufactured by Tsubaki.

### Special Surface-Treated Chain (NEP)

This next-generation chain boasts the highest level of corrosion resistance among various plated and surface-treated chains and uses no toxic substances such as hexavalent chromium, thus reducing the impact on the environment.

## Extended Service Life

FDA-approved food-grade lubricant is applied at the factory following assembly to ensure uniform coverage and protection of each chain component.

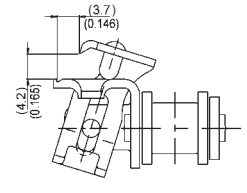
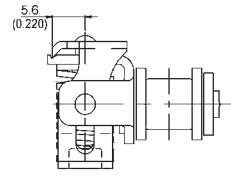
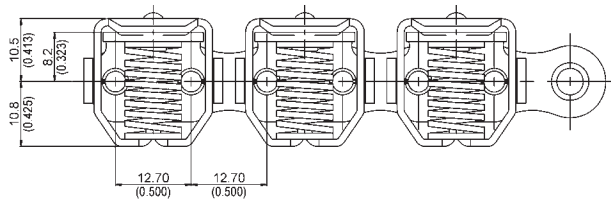
## All-Inclusive Package from Tsubaki



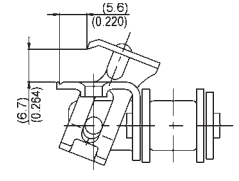
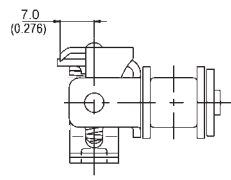
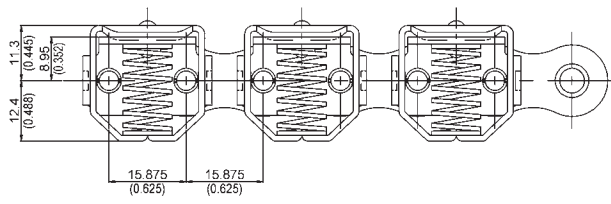
Precision machined sprockets with cam (assembled for both Type M and Standard Gripper Chain applications) are available as design stock.



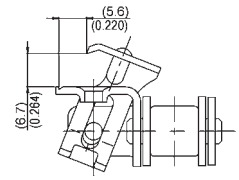
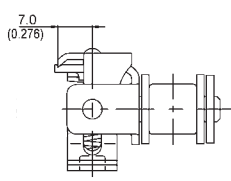
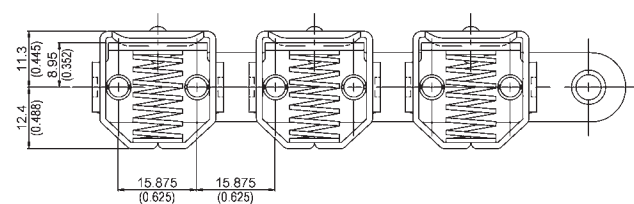
**RS08B-NP-KUM and RS08B-LM-NP-KUM**



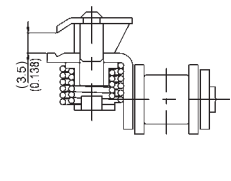
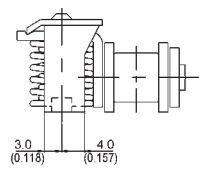
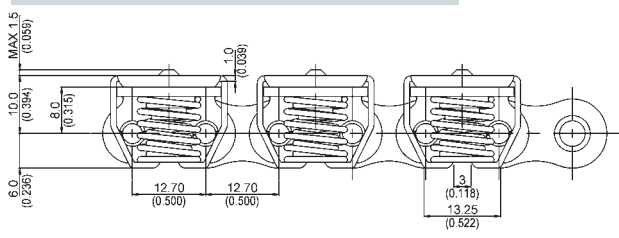
**RS10B-NP-KUM and RS10B-LM-NP-KUM**



**RS10B-SS-KUM**



**RS08B-NP-KUS and RS08B-LM-NP-KUS**



ISO Ref.	Tsubaki Chain No.	Connecting Link No.	Pitch		Roller Dia.		Inside Width		Clamp Type	Clamping Force	Materials		
			mm	in.	mm	in.	mm	in.			Base Chain	Clamp	Spring
08B-1	RS08B-NP-KUM	RS08B-NP-KUM-CL	12.70	.500	8.51	.335	7.75	.305	Type M	50	NP	304SS	SA
08B-1	RS08B-LM-NP-KUM	RS08B-LM-NP-KUM-CL	12.70	.500	8.51	.335	7.75	.305	Type M	50	NP Lambda	304SS	SA
10B-1	RS10B-NP-KUM	RS10B-NP-KUM-CL	15.875	.625	10.16	.400	9.65	.380	Type M	70	NP	304SS	SA
10B-1	RS10B-LM-NP-KUM	RS10B-LM-NP-KUM-CL	15.875	.625	10.16	.400	9.65	.380	Type M	70	NP Lambda	304SS	SA
10B-1	RS10B-SS-KUM	RS10B-SS-KUM-CL	15.875	.625	10.16	.400	9.65	.380	Type M	70	SS	304SS	SS
08B-1	RS08B-NP-KUS	RS08B-NP-KUS-CL	12.70	.500	8.51	.335	7.75	.305	Standard	55	NP	304SS	SA
08B-1	RS08B-LM-NP-KUS	RS08B-LM-NP-KUS-CL	12.70	.500	8.51	.335	7.75	.305	Standard	55	NP Lambda	304SS	SA

NP = Nickel-Plated Steel SS = Stainless Steel SA = Special Alloy  
 Note: Do not twist chain. Use care not to damage attachment when unwinding chain from reel.



## TSUBAKIMOTO CHAIN CO.

### TSUBAKIMOTO CHAIN CO.

#### Headquarters

Nakanoshima Mitsui Building  
3-3-3 Nakanoshima, Kita-ku  
Osaka 530-0005, Japan  
Phone : 81-6-6441-0011  
Facsimile : 81-6-6441-0489  
Internet:  
<http://tsubakimoto.com/>

#### Chain Division

#### Chain Sales Department

1-3 Kannabidai 1-chome  
Kyotanabe, Kyoto 610-0380, Japan  
Phone : 81-774-64-5023/4  
Facsimile : 81-774-64-5212

For further information please  
contact the Chain Division.



Kyotanabe Plant

### Global Associated Partners:

#### U.S. TSUBAKI, INC.

301 E. Marquardt Drive  
Wheeling, IL 60090-6497  
U.S.A.  
Phone : 1-847-459-9500  
Facsimile : 1-847-459-9515

#### TSUBAKIMOTO EUROPE B.V.

Aventurijn 1200, 3316 LB Dordrecht  
The Netherlands  
Phone : 31-78-6204000  
Facsimile : 31-78-6204001

#### TSUBAKI of CANADA LIMITED

1630 Drew Road  
Mississauga, Ontario, L5S 1J6  
Canada  
Phone : 1-905-676-0400  
Facsimile : 1-905-676-0904

#### TSUBAKIMOTO SINGAPORE PTE. LTD.

25 Gul Lane  
Jurong  
Singapore 629419  
Phone : 65-6861-0422/3/4  
Facsimile : 65-6861-7035

#### TSUBAKI AUSTRALIA PTY. LTD.

Unit E, 95-101 Silverwater Road  
Silverwater, N.S.W. 2128  
Australia  
Phone : 61-2-9648-5269  
Facsimile : 61-2-9648-3115

#### TAIWAN TSUBAKIMOTO CO.

No. 33, Lane 17, Zihciang North Road  
Gueishan Township, Taoyuan County  
Taiwan  
Phone : 886-33-293827/8/9  
Facsimile : 886-33-293065

#### TSUBAKIMOTO U.K. LTD.

Osier Drive, Sherwood Park  
Annesley, Nottingham  
NG15 0DX U.K.  
Phone : 44-1623-688-700  
Facsimile : 44-1623-688-789

#### TSUBAKIMOTO (THAILAND) CO., LTD.

999/9 The Offices at Centralworld  
10th Floor, No. 1001, Rama 1 Road  
Pathumwan, Bangkok 10330 Thailand  
Phone : 66-2-264-5354/5/6  
Facsimile : 66-2-251-3912

#### TSUBAKIMOTO CHAIN TRADING (SHANGHAI) CO., LTD.

Room 1712, Lippo Plaza  
No. 222 Huai Hai Zhong Road  
Shanghai 200021, China  
Phone : 86-21-5396-6651/2  
Facsimile : 86-21-5396-6628

#### KOREA CONVEYOR IND. CO., LTD.

72-1 Onsoo-Dong  
Kuro-Ku, Seoul  
Korea  
Phone : 82-2-2619-4711  
Facsimile : 82-2-2619-0819

Distributed by: