

# MASTER LT

tube  
custom cavity size options  
cavity options  
size



**KABELSCHLEPP**

## Key Features:

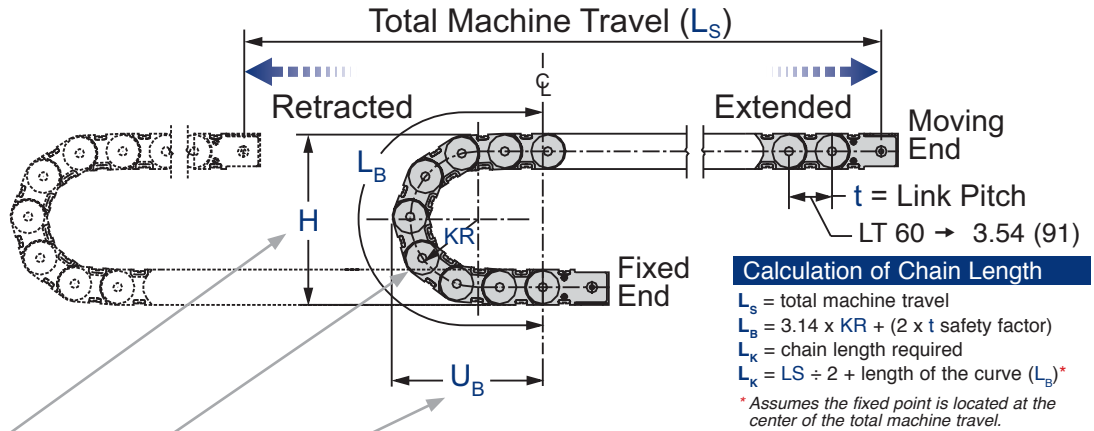
- Optimized operational stability for large additional loads
- Rugged aluminum lids offer superior protection from chips and other debris
- Individual cavity widths available in any width increments required
- Extremely quiet due to a patented internal damping system and additional optional damping elements which can be attached to the outer radius
- Low intrinsic weight
- Standard bend radii with application-specific intermediate radii available upon request
- Snap-in vertical and horizontal nylon cable separation available
- Can be opened quickly on the inside and the outside radius for easy cable installation and field service



# GENERAL DATA

|   |                |
|---|----------------|
| <b>E</b>  | <b>CONOMIC</b> |
| <b>V</b>  | <b>ALUE</b>    |
| <b>A</b>  | <b>DDED</b>    |
| <b>8</b>  |                |
| <p>A product group's EVA score is a general indicator that allows a customer to quickly and easily compare a product group's basic price, features, capabilities and value relative to other comparably sized products within the KS product range.</p> |                |
| <p>Download 3D CAD files, videos, updated product info &amp; much more at:<br/> <a href="http://www.kabelschlepp.com/masterlt.htm">www.kabelschlepp.com/masterlt.htm</a></p>  |                |

Dimensions in inches (mm)



# Technical Data

| Series   | Mounting Height<br><b>H</b> | Bend Radius<br><b>KR *</b> | Depot<br><b>U<sub>B</sub></b> | Loop Length<br><b>L<sub>B</sub></b> |
|----------|-----------------------------|----------------------------|-------------------------------|-------------------------------------|
| Option A | <b>15.28</b><br>(388)       | <b>5.91</b><br>(150)       | <b>11.22</b><br>(285)         | <b>25.71</b><br>(653)               |
| Option B | <b>19.21</b><br>(488)       | <b>7.87</b><br>(200)       | <b>13.19</b><br>(335)         | <b>31.89</b><br>(810)               |
| Option C | <b>23.15</b><br>(588)       | <b>9.84</b><br>(250)       | <b>15.16</b><br>(385)         | <b>38.07</b><br>(967)               |
| Option D | <b>27.09</b><br>(688)       | <b>11.81</b><br>(300)      | <b>17.13</b><br>(435)         | <b>44.25</b><br>(1124)              |
| Option E | <b>31.02</b><br>(788)       | <b>13.78</b><br>(350)      | <b>19.09</b><br>(485)         | <b>50.43</b><br>(1281)              |
| Option F | <b>34.96</b><br>(888)       | <b>15.75</b><br>(400)      | <b>21.06</b><br>(535)         | <b>56.61</b><br>(1438)              |
| Option G | <b>42.83</b><br>(1088)      | <b>19.69</b><br>(500)      | <b>25.00</b><br>(635)         | <b>68.98</b><br>(1752)              |

**!** \* Bend Radius (KR) can be custom modified to customer specification. Consult factory for details.



### Self-Supporting Lengths

| Unsupported Length | 1.64 | 3.28 | 4.92 | 6.56 | 8.20 | 9.84 | 11.48 |
|--------------------|------|------|------|------|------|------|-------|
| ft                 | 0.5  | 1.0  | 1.5  | 2.0  | 2.5  | 3.0  | 3.5   |
| Additional Load    | 16.8 | 13.4 | 10.1 | 6.7  | 3.4  | 0    |       |
| lbs                | 20.2 | 16.8 | 13.4 | 10.1 | 6.7  | 3.4  | 0     |
| kg                 | 30   | 25   | 20   | 15   | 10   | 5    | 0     |
| m                  |      |      |      |      |      |      |       |

**Permissible sag:**  
 In the case of longer travel lengths, sag of the cable carrier system is technically permissible depending on the application. Consult factory for more information.

## How To Order

1-800-443-4216



Number of Systems Req. x Carrier Type + Cavity Width (Bj) + Frame Stay Type + Bend Radius x Links in Length + Bracket Position + Dividers (#vert / #horz)

**10 x LT60 - 300 mm - RML - 250 x 65 Links + FU/MU + 4v/2h**

Specifications are subject to change without notice. KSA-0810-GC

# RML

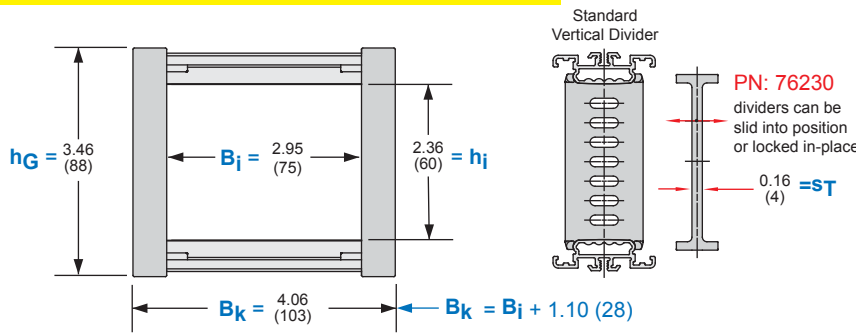
Lid System

Features twist in/out aluminum bars on the inner radius and outer radius.

Usable Cavity Widths ( $B_i$ ) are available from **2.95" (75 mm)** through **23.62" (600 mm)** in any width increment required by the customer.

**LT60 - 75 mm - RML - (KR) - (# of links) - (brackets) - (dividers)**

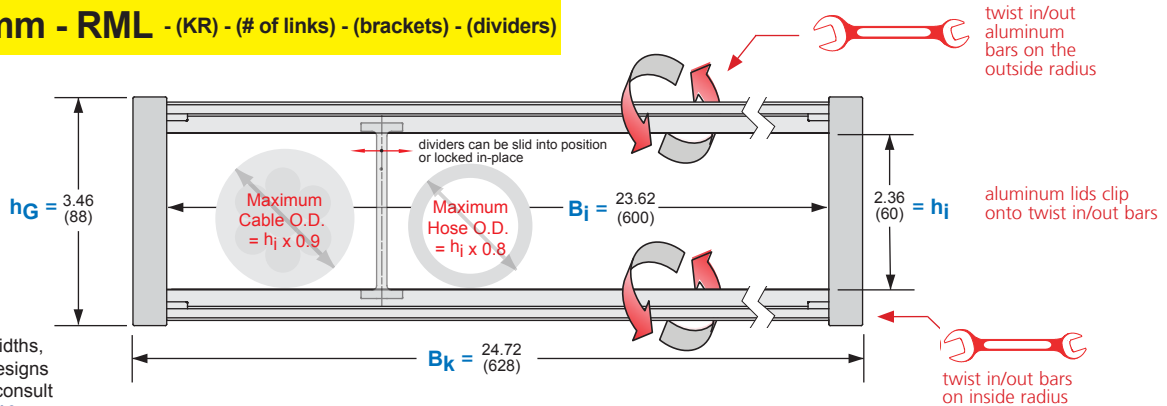
Recommended **MINIMUM** Width



- $B_k$  = Outer chain width
- $B_i$  = Inner chain cavity (usable) width
- $h_G$  = Outer chain link height
- $h_i$  = Inner chain cavity (usable) height
- ST = Vertical divider thickness

**LT60 - 600 mm - RML - (KR) - (# of links) - (brackets) - (dividers)**

Recommended **MAXIMUM** Width



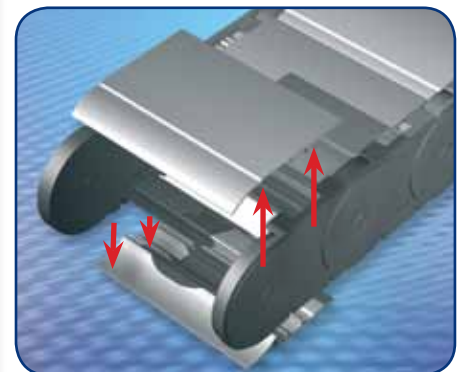
**Note:** For extended widths, multiple chain-band designs are available, please consult factory: **1-800-443-4216**

## Why use RML system

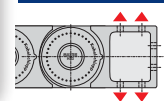


- Light weight and rugged aluminum lids attach to twist out bars for superior protection from hot chips and debris.
- Simply by twisting on or twisting off the aluminum bar 90 degrees, cables & hoses can be quickly and easily installed (laid inside).
- Ideal when light weight and cost effective designs are required.
- Twist-in locking bars on the inside and outside radius form an extremely strong "box" compartment around the contents.
- Smooth cable friendly and strong aluminum bars.
- Quick and easy in-field service.
- Exact widths are available to fit any application's width restrictions in 1 mm increments.

## RML System Assembly Detail



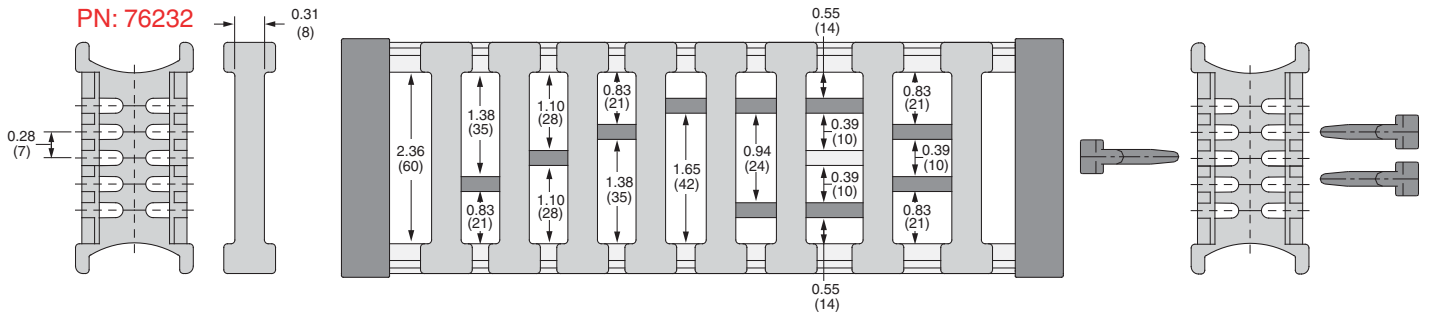
## Mounting Bracket Options



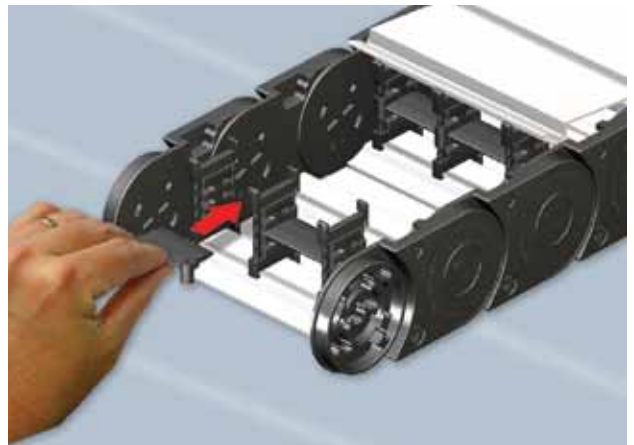
For detailed drawings and dimensions of available options, please see pages: 18.04 - 18.05

# Easy Snap-In Cavity Partitioning System for MASTER LT 60 RML Bar

When multiple cables/hoses or cables/hoses with different diameters are to be placed inside the same carrier system and require vertical stacking, a simple to install snap-in cavity partitioning system should be used. This system easily allows for varying carrier system cavity compartment heights (shelves) and widths (dividers) necessary to properly accommodate each cable or hose.



| Part Number | Dimension  |            |            |
|-------------|------------|------------|------------|
|             | A          | B          | C          |
| 71514       | 0.63 (16)  | 0.31 (8)   | 0.18 (4.5) |
| 52580       | 0.71 (18)  | 0.39 (10)  | 0.16 (4)   |
| 52581       | 0.91 (23)  | 0.59 (15)  | 0.16 (4)   |
| 52582       | 1.10 (28)  | 0.79 (20)  | 0.16 (4)   |
| 71515       | 1.26 (32)  | 0.94 (24)  | 0.18 (4.5) |
| 52583       | 1.30 (33)  | 0.98 (25)  | 0.16 (4)   |
| 52584       | 1.50 (38)  | 1.18 (30)  | 0.16 (4)   |
| 52585       | 1.69 (43)  | 1.38 (35)  | 0.16 (4)   |
| 71516       | 1.89 (48)  | 1.57 (40)  | 0.18 (4.5) |
| 52586       | 1.89 (48)  | 1.57 (40)  | 0.16 (4)   |
| 52587       | 2.28 (58)  | 1.97 (50)  | 0.16 (4)   |
| 71517       | 2.52 (64)  | 2.20 (56)  | 0.18 (4.5) |
| 52588       | 2.68 (68)  | 2.36 (60)  | 0.16 (4)   |
| 52589       | 3.07 (78)  | 2.76 (70)  | 0.16 (4)   |
| 71518       | 3.15 (80)  | 2.83 (72)  | 0.18 (4.5) |
| 52590       | 3.46 (88)  | 3.15 (80)  | 0.16 (4)   |
| 71519       | 3.78 (96)  | 3.46 (88)  | 0.18 (4.5) |
| 71520       | 4.41 (112) | 4.09 (104) | 0.18 (4.5) |
| 71521       | 5.04 (128) | 4.72 (120) | 0.18 (4.5) |
| 71522       | 5.67 (144) | 5.35 (136) | 0.18 (4.5) |
| 71523       | 6.30 (160) | 5.98 (152) | 0.18 (4.5) |
| 71524       | 6.93 (176) | 6.61 (168) | 0.18 (4.5) |
| 71525       | 7.56 (192) | 7.24 (184) | 0.18 (4.5) |
| 71526       | 8.19 (208) | 7.87 (200) | 0.18 (4.5) |



Horizontal shelves can be easily pressed and locked into place between the specially designed RML/RLS vertical dividers. This makes horizontal and vertical partitioning of the carrier's cavity easy to install and highly customizable to meet your application's unique needs.

## MASTER LT 60 UMB (Universal Mounting Brackets)

### Mounting Bracket Dimensions

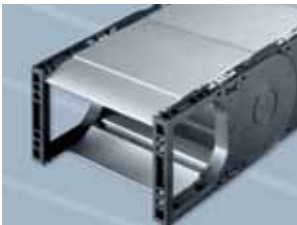
Universal KSA Style Nylon Mounting Brackets

For the MASTER LT 60 series, there are two different Universal Mounting Bracket styles available to best suit most assembly situations. Each of these 2 types of UMB connectors can be screwed in from the top, bottom, or from the front (flange).

Also available with C-Channel, slot width 11–12 mm. Fits commercial saddle type cable and hose clamps with small base as well as KabelClamp SZL strain relief clamps. (see cable carrier accessories)

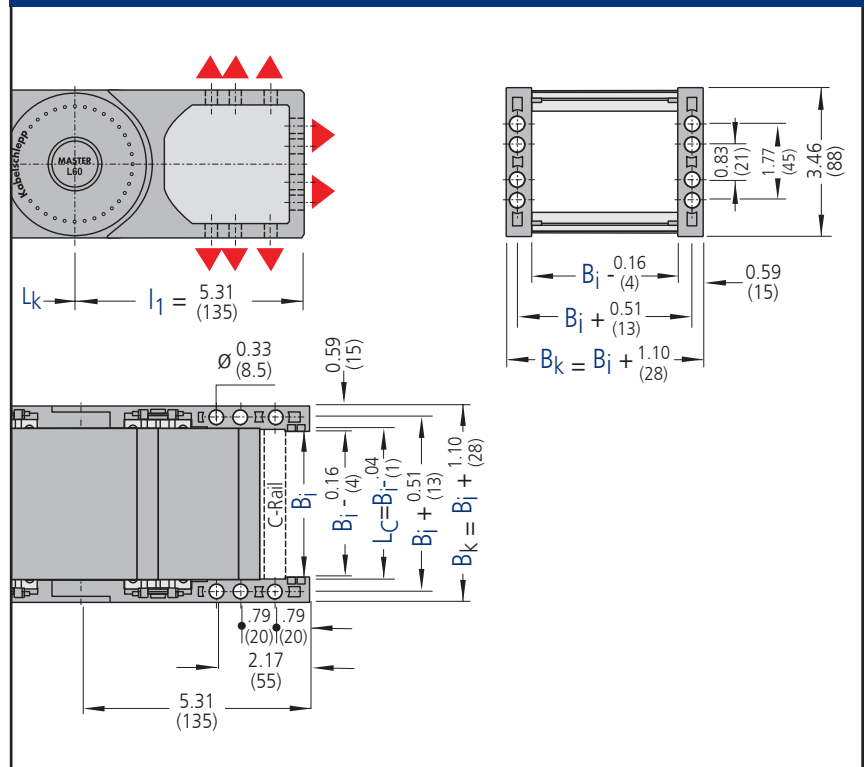


Standard bracket for many of the hole patterns commercially available.



Open bracket allows easy access to mounting holes in restricted installation conditions. This bracket has the same hole dimensions as the Standard bracket.

### Bracket Dimensions for LT 60 Standard and Open Brackets



### How to order Universal KSA Style brackets:

**X U X**

- Bracket End**
  - F - Fixed End
  - M - Moving End
- Bracket Type**
  - U - Universal Mounting Bracket
- Variation**
  - S - Standard
  - O - Open

Example: **FUS/MUO**

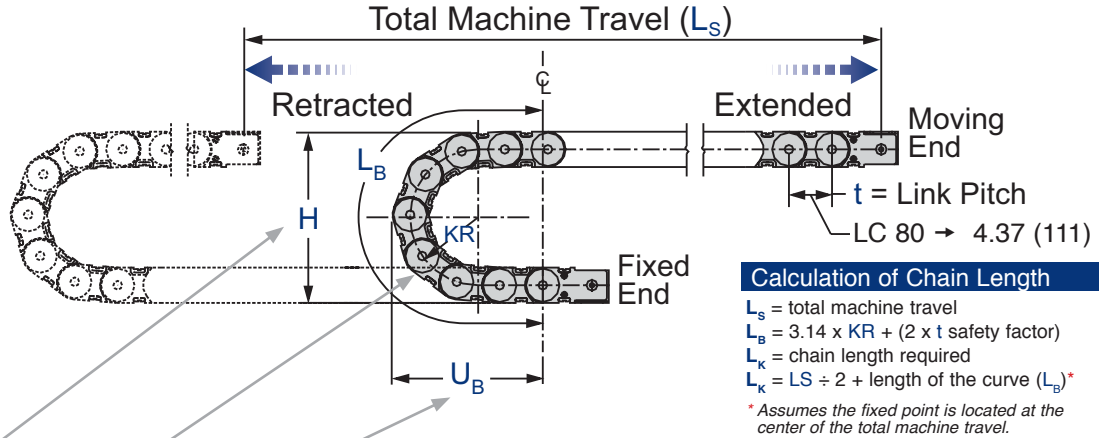
# GENERAL DATA

**E** CONOMIC  
**V** ALUE  
**A** DDED

**8**

A product group's EVA score is a general indicator that allows a customer to quickly and easily compare a product group's basic price, features, capabilities and value relative to other comparably sized products within the KS product range.

Download 3D CAD files, videos, updated product info & much more at:  
[www.kabelschlepp.com/masterlt.htm](http://www.kabelschlepp.com/masterlt.htm)



Dimensions in inches (mm)

## Technical Data

| Series   | Mounting Height<br><b>H</b> | Bend Radius<br><b>KR *</b> | Depot<br><b>U<sub>B</sub></b> | Loop Length<br><b>L<sub>B</sub></b> |
|----------|-----------------------------|----------------------------|-------------------------------|-------------------------------------|
| Option A | 20.08<br>(510)              | 7.87<br>(200)              | 11.22<br>(285)                | 25.71<br>(653)                      |
| Option B | 24.02<br>(610)              | 9.84<br>(250)              | 13.19<br>(335)                | 31.89<br>(810)                      |
| Option C | 27.95<br>(710)              | 11.81<br>(300)             | 15.16<br>(385)                | 38.07<br>(967)                      |
| Option D | 31.89<br>(810)              | 13.78<br>(350)             | 17.13<br>(435)                | 44.25<br>(1124)                     |
| Option E | 35.83<br>(910)              | 15.75<br>(400)             | 19.09<br>(485)                | 50.43<br>(1281)                     |
| Option F | 43.70<br>(1110)             | 19.69<br>(500)             | 21.06<br>(535)                | 56.61<br>(1438)                     |

**!** \* Bend Radius (KR) can be custom modified to customer specification. Consult factory for details.



### Self-Supporting Lengths

| Unsupported Length | 1.64 | 3.28 | 4.92 | 6.56 | 8.20 | 9.84 | 11.48 |
|--------------------|------|------|------|------|------|------|-------|
| ft                 | 0.5  | 1.0  | 1.5  | 2.0  | 2.5  | 3.0  | 3.5   |
| Additional Load    | 16.8 | 16.8 | 16.8 | 16.8 | 16.8 | 16.8 | 16.8  |
| lbs                | 16.8 | 16.8 | 16.8 | 16.8 | 16.8 | 16.8 | 16.8  |
| kg                 | 7.6  | 7.6  | 7.6  | 7.6  | 7.6  | 7.6  | 7.6   |

**Permissible sag:**  
In the case of longer travel lengths, sag of the cable carrier system is technically permissible depending on the application. Consult factory for more information.

### How To Order

1-800-443-4216



Number of Systems Req. x Carrier Type + Cavity Width (Bj) + Frame Stay Type + Bend Radius x Links in Length + Bracket Position + Dividers (#vert / #horz)

**5 x LT80 - 700 mm - RML - 400 x 78 Links + FU/MU + 12v/4h**

Specifications are subject to change without notice. KSA-0810-GC

Series **LT 80**

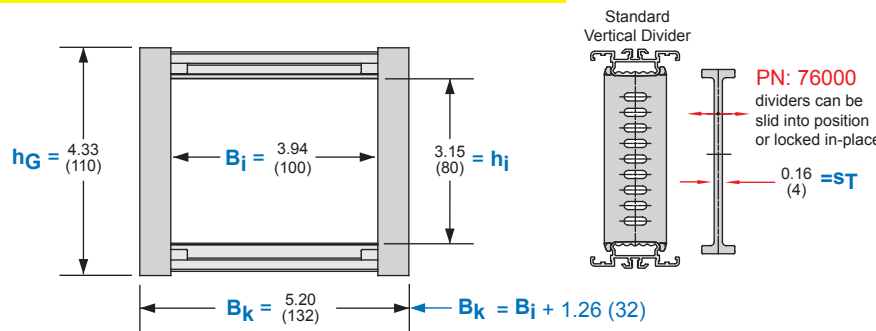
**RML**  
Lid System

Features twist in/out aluminum bars on the inner radius and outer radius.

Usable Cavity Widths ( $B_i$ ) are available from **3.94" (100 mm)** through **31.50" (800 mm)** in any width increment required by the customer.

**LT80 - 100 mm - RML - (KR) - (# of links) - (brackets) - (dividers)**

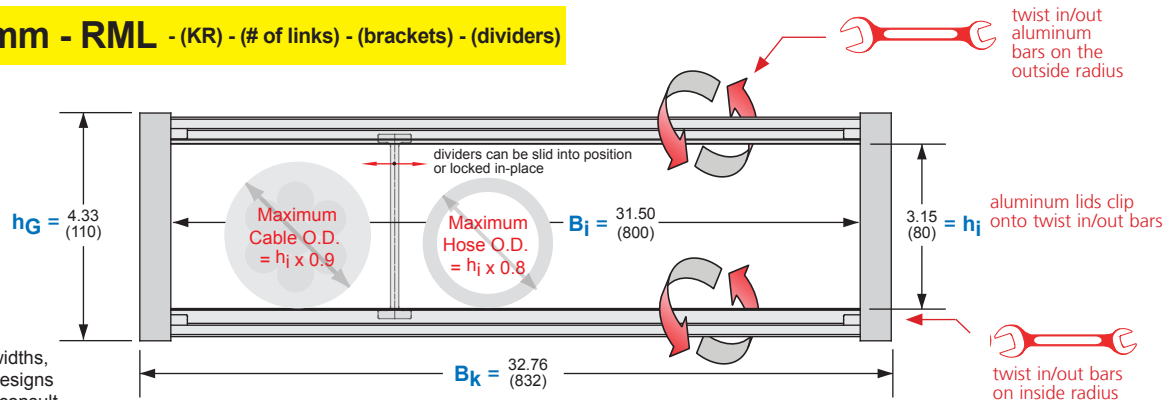
Recommended  
**MINIMUM**  
Width



- $B_k$  = Outer chain width
- $B_i$  = Inner chain cavity (usable) width
- $h_G$  = Outer chain link height
- $h_i$  = Inner chain cavity (usable) height
- ST = Vertical divider thickness

**LT80 - 800 mm - RML - (KR) - (# of links) - (brackets) - (dividers)**

Recommended  
**MAXIMUM**  
Width



Note: For extended widths, multiple chain-band designs are available, please consult factory: 1-800-443-4216

**Why use RML system**

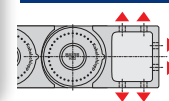


- Light weight and rugged aluminum lids attach to twist out bars for superior protection from hot chips and debris.
- Simply by twisting on or twisting off the aluminum bar 90 degrees, cables & hoses can be quickly and easily installed (laid inside).
- Ideal when light weight and cost effective designs are required.
- Twist-in locking bars on the inside and outside radius form an extremely strong "box" compartment around the contents.
- Smooth cable friendly and strong aluminum bars.
- Quick and easy in-field service.
- Exact widths are available to fit any application's width restrictions in 1 mm increments.

**RML System Assembly Detail**



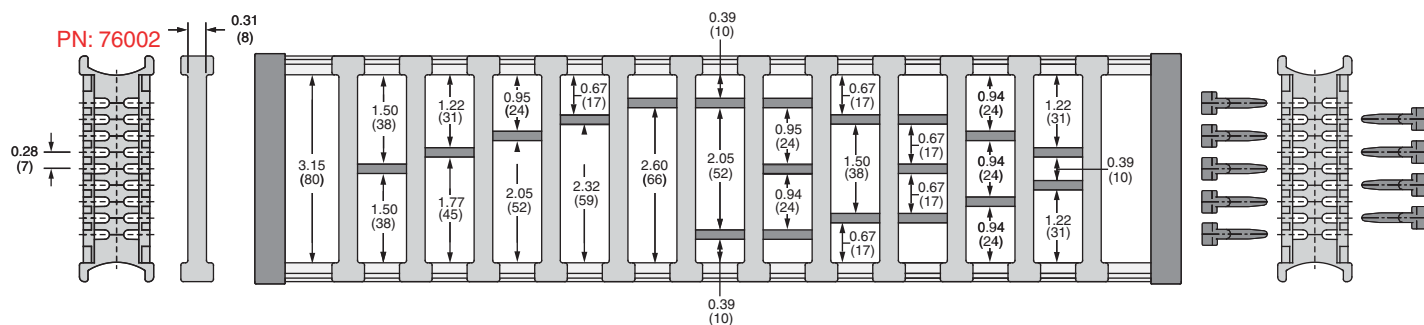
**Mounting Bracket Options**



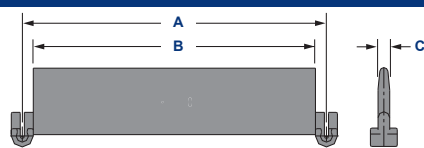
For detailed drawings and dimensions of available options, please see pages: 18.08 - 18.09

## Easy Snap-In Cavity Partitioning System for MASTER LT 80 RML Bar

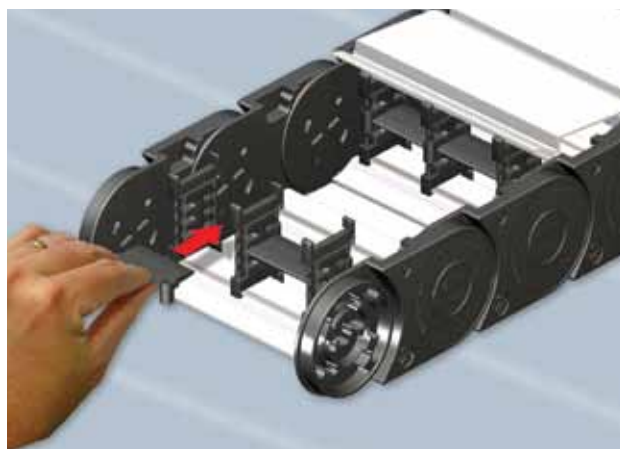
When multiple cables/hoses or cables/hoses with different diameters are to be placed inside the same carrier system and require vertical stacking, a simple to install snap-in cavity partitioning system should be used. This system easily allows for varying carrier system cavity compartment heights (shelves) and widths (dividers) necessary to properly accommodate each cable or hose.



### Dimension



| Part Number | A          | B          | C          |
|-------------|------------|------------|------------|
| 71514       | 0.63 (16)  | 0.31 (8)   | 0.18 (4.5) |
| 52580       | 0.71 (18)  | 0.39 (10)  | 0.16 (4)   |
| 52581       | 0.91 (23)  | 0.59 (15)  | 0.16 (4)   |
| 52582       | 1.10 (28)  | 0.79 (20)  | 0.16 (4)   |
| 71515       | 1.26 (32)  | 0.94 (24)  | 0.18 (4.5) |
| 52583       | 1.30 (33)  | 0.98 (25)  | 0.16 (4)   |
| 52584       | 1.50 (38)  | 1.18 (30)  | 0.16 (4)   |
| 52585       | 1.69 (43)  | 1.38 (35)  | 0.16 (4)   |
| 71516       | 1.89 (48)  | 1.57 (40)  | 0.18 (4.5) |
| 52586       | 1.89 (48)  | 1.57 (40)  | 0.16 (4)   |
| 52587       | 2.28 (58)  | 1.97 (50)  | 0.16 (4)   |
| 71517       | 2.52 (64)  | 2.20 (56)  | 0.18 (4.5) |
| 52588       | 2.68 (68)  | 2.36 (60)  | 0.16 (4)   |
| 52589       | 3.07 (78)  | 2.76 (70)  | 0.16 (4)   |
| 71518       | 3.15 (80)  | 2.83 (72)  | 0.18 (4.5) |
| 52590       | 3.46 (88)  | 3.15 (80)  | 0.16 (4)   |
| 71519       | 3.78 (96)  | 3.46 (88)  | 0.18 (4.5) |
| 71520       | 4.41 (112) | 4.09 (104) | 0.18 (4.5) |
| 71521       | 5.04 (128) | 4.72 (120) | 0.18 (4.5) |
| 71522       | 5.67 (144) | 5.35 (136) | 0.18 (4.5) |
| 71523       | 6.30 (160) | 5.98 (152) | 0.18 (4.5) |
| 71524       | 6.93 (176) | 6.61 (168) | 0.18 (4.5) |
| 71525       | 7.56 (192) | 7.24 (184) | 0.18 (4.5) |
| 71526       | 8.19 (208) | 7.87 (200) | 0.18 (4.5) |



Horizontal shelves can be easily pressed and locked into place between the specially designed RML/RLS vertical dividers. This makes horizontal and vertical partitioning of the carrier's cavity easy to install and highly customizable to meet your application's unique needs.

## MASTER LT 80 UMB (Universal Mounting Brackets)

### Mounting Bracket Dimensions

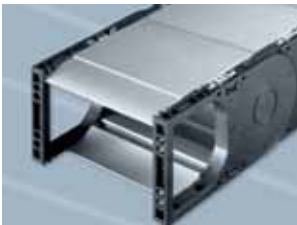
Universal KSA Style Nylon Mounting Brackets

For the MASTER LT 80 series, there are two different Universal Mounting Bracket styles available to best suit most assembly situations. Each of these 2 types of UMB connectors can be screwed in from the top, bottom, or from the front (flange).

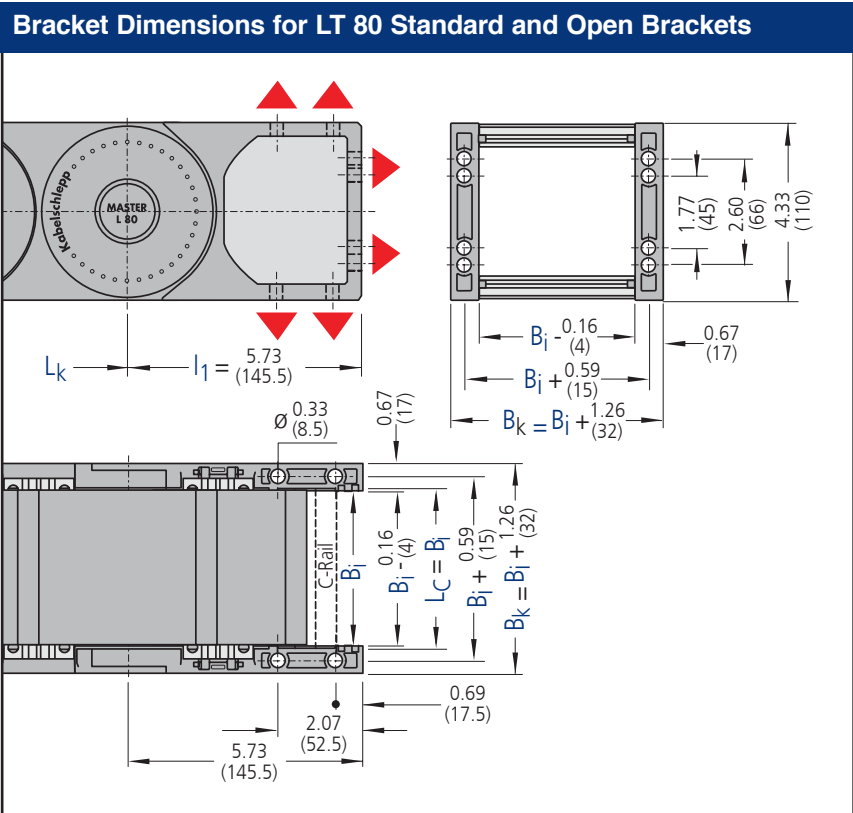
Also available with C-Channel, slot width 11–12 mm. Fits commercial saddle type cable and hose clamps with small base as well as KabelClamp SZL strain relief clamps. (see cable carrier accessories)



Standard bracket for many of the hole patterns commercially available.



Open bracket allows easy access to mounting holes in restricted installation conditions. This bracket has the same hole dimensions as the Standard bracket.



### How to order Universal KSA Style brackets:

**X U X**

- Bracket End**
  - F - Fixed End
  - M - Moving End
- Bracket Type**
  - U - Universal Mounting Bracket
- Variation**
  - S - Standard
  - O - Open

Example: **FUS/MUO**

# KABELSCHLEPP

A member of the TSUBAKI GROUP

Phone: 414-354-1994  
Fax: 414-354-1900

www.kabelschlepp.com  
sales@kabelschlepp.com

KabelSchlepp America, Inc.  
7100 W. Marcia Road, Milwaukee, WI 53223 - USA