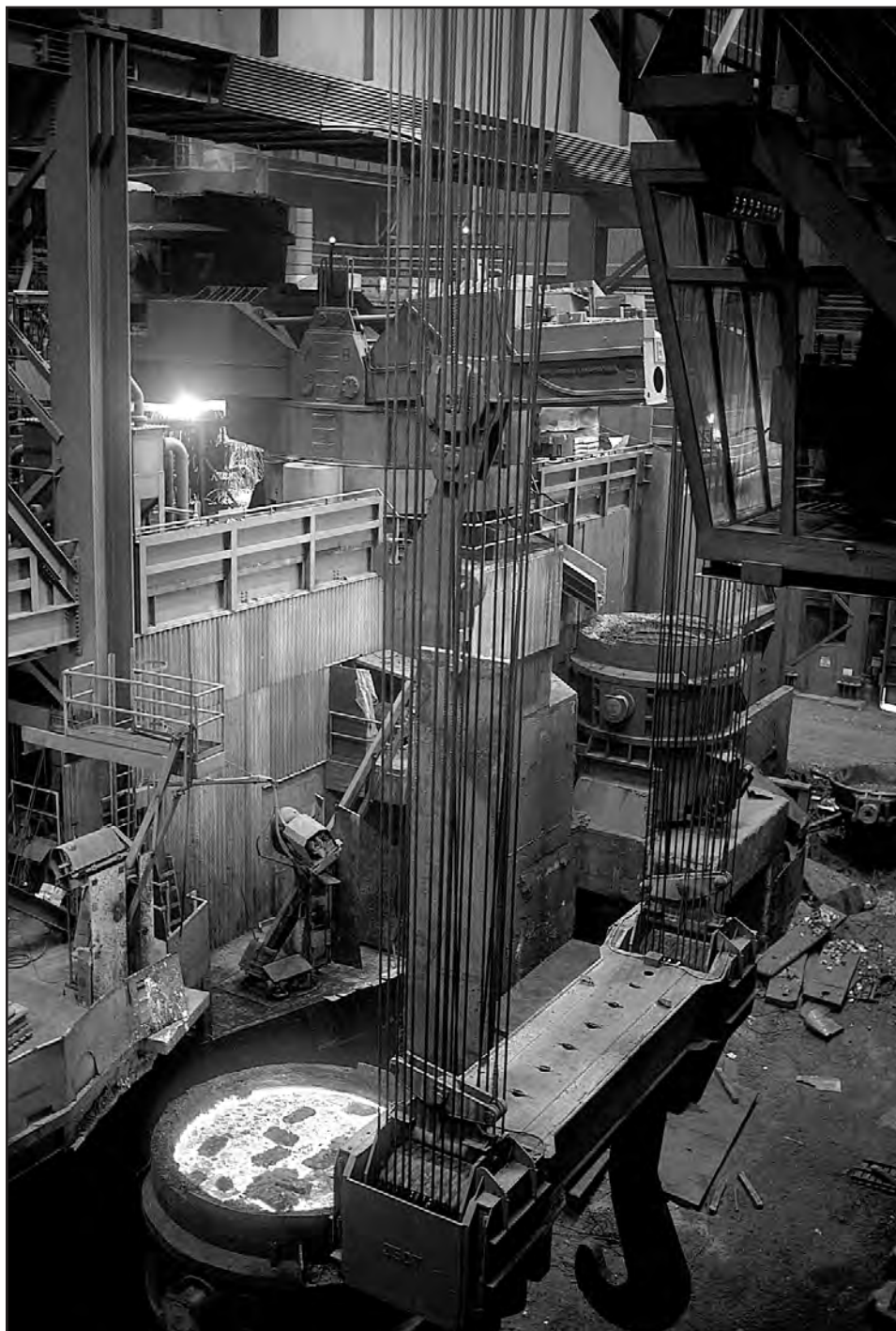


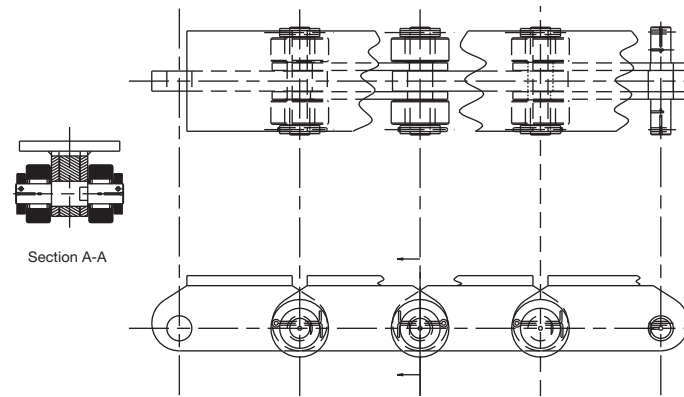
The metal processing industry has special conveyor needs. The weight of the materials, distance to be conveyed, and the environment make great demands on chain. Tsubaki Conveyor Chains are designed to stand up to the punishing conditions as raw metals are turned into finished goods. We offer a variety of Conveyor Chains for the metal processing industry. Some are listed on the following pages. In addition, we can manufacture a chain to meet your exact specifications. Contact Tsubaki Technical Support to discuss your application.



Flat Top Chains

Flat Top Chains are designed to convey ingots, billets, large structural shapes, upended coils, and more to and from process operations. The flat top plate design offers large areas to evenly distribute product load. This minimizes the effect of transfer impacts that can cause product damage. In addition, the top plate protects the chain joint from unwanted exposure to heat or abrasive particles. Because of the heavy load, bearing rollers are widely used to provide the lowest chain tension and trouble-free operation.

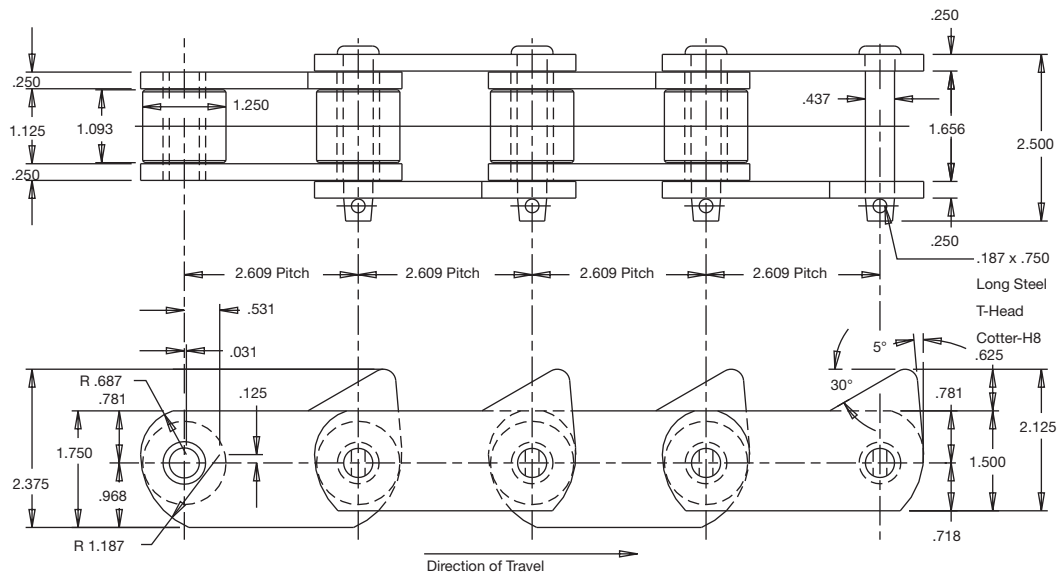
Flat Top Chain



Coiled Wire Chains

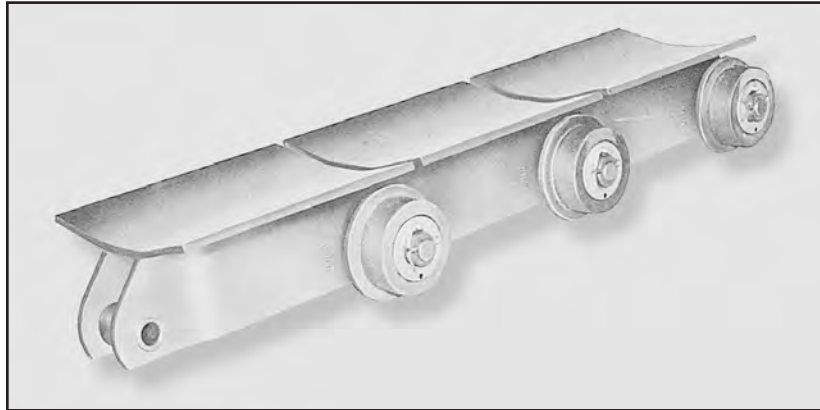
Coiled Wire Chains are designed to run conveyors in hot wire mills. These conveyors act as cooling lines, transferring continuous loops of hot wire, which are coiled after cooling down. Coiled Wire Chains are offered with special M-style attachments at every pitch to force the wire to fall between as it is loaded onto the moving conveyor.

Coiled Wire Chain with M Attachment

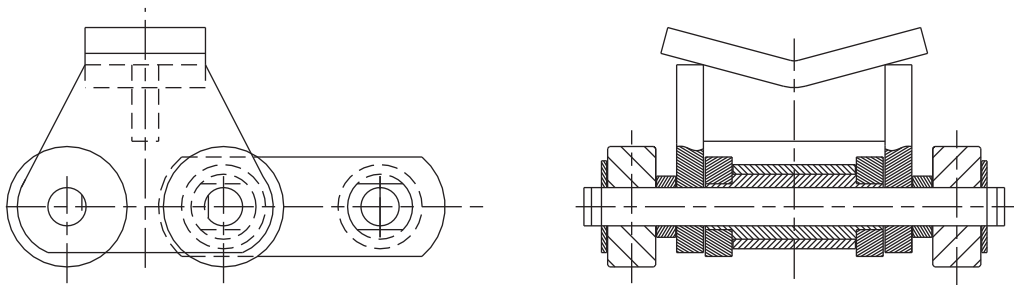


Coil Conveyor Chains

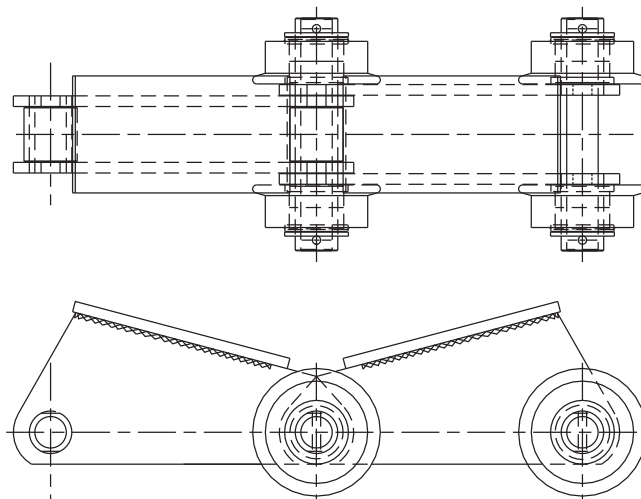
Move coils, pipe, tubing, or other large, round shapes with Gull Wing Chains or Saddle Attachments on Roller Conveyor Chains. The “V” shape is designed to accommodate a range of diameter sizes that run within the process. The saddle or “V” plate corner edges can be ground smooth to avoid scratching product during transfers. Gull Wing Chains or Saddle Attachments on Roller Conveyor Chains can be adapted to a variety of conveyor configurations, from top plates to bearing rollers and from inboard to outboard carrier rollers. Often economy is achieved through the use of multiple chain strands or chain strands independent of carrier assemblies.



Gull Wing Chain



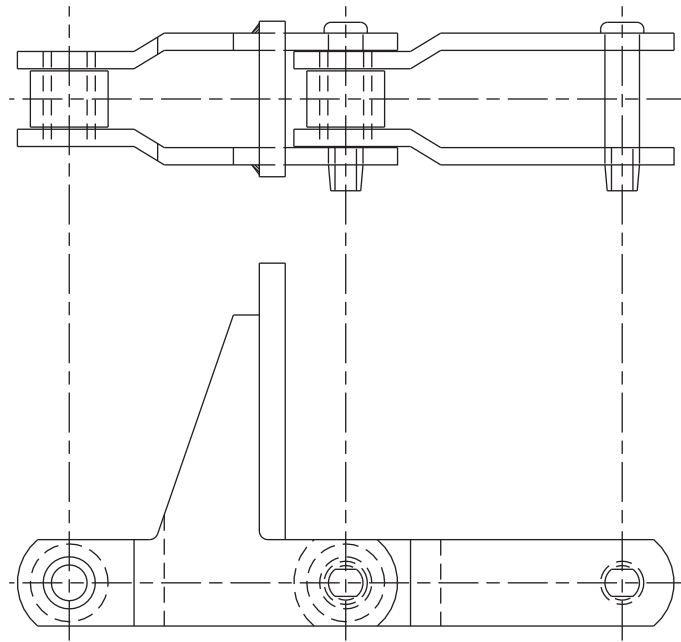
Saddle Attachment



Pusher Attachment Chains

Pusher Attachment Chains are designed for cooling beds where temperatures can reach 1,900°F. Special finger attachments push against sliding or rolling product such as billet or bars, keeping it on-line. Pusher Attachment Chains are usually designed with three to six strands across to side push evenly through the bar length. Attachments are generally MM-style with top rollers or pusher bars that project upward to engage product for side transfer movement. Designs are customized to your operation, based on the width or shape of the conveyed material.

MM Attachment



Top Roller Attachment

